

AutoCad

4

3

2

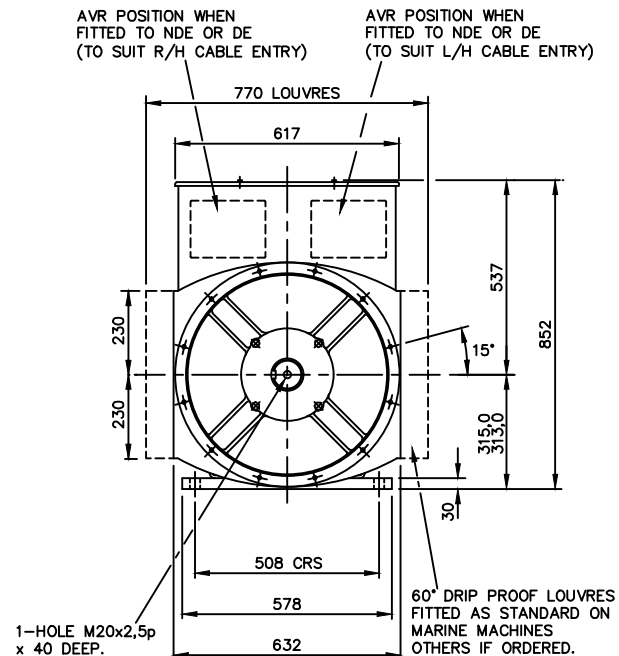
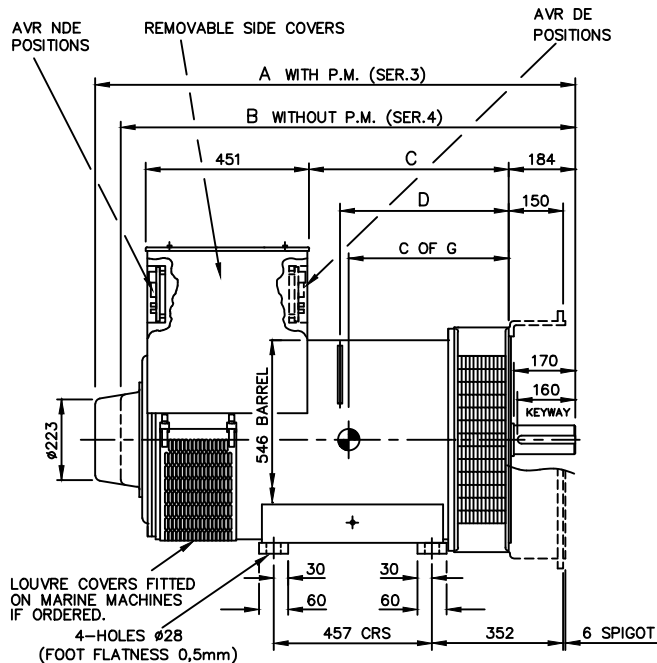
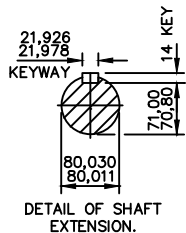
1

REL NO	REV	DETAILS	DWN	CKD	APVD	DATE
ECO-155701	H	CORRECTED FOOT WIDTH FROM 80MM TO 60MM	JAP	SPA	AS	07OCT15

FRAME	DIMENSIONS			
	A	B	C	D
HC4.C.D.E	1326	1255	554	463
HC4.F	1416	1345	644	553

CORE	C OF G	NETT WT.kg
C	433	850,5
D	453	915,5
E	474	995,5
F	500	1123,5

WEIGHTS DO NOT INCLUDE  
SAE ADAPTOR FLANGES



NOTE: -  
CUSTOMER MAY CUT CABLE ENTRY HOLES AS REQUIRED IN ANY OF THE FOUR  
TERMINAL BOX SIDES SUBJECT TO POSITION OF AVR, TERMINALS, ETC.

FOR FLANGE ADAPTOR DETAILS SEE 41-4497 SHT-02

UNLESS SPECIFIED ALL DIMENSIONS ARE IN MILLIMETERS					CUMMINS GENERATOR TECHNOLOGIES		
DO NOT SCALE PRINT	DRAWN	SMC			DRAWING, GENERAL ASSEMBLY		
	CHECKED	SMC		HC4 CDEF 2-BRG STD GA			
	APPROVED	CR		SITE CODE	DWC SIZE	41-4497	SHEET
CONFIDENTIAL	DATE	05JUL00					
PROPERTY OF CUMMINS	SCALE	FIRST USED ON					
GENERATOR TECHNOLOGIES	1:10	---					

4

3

2

1

A

A

AutoCad

4

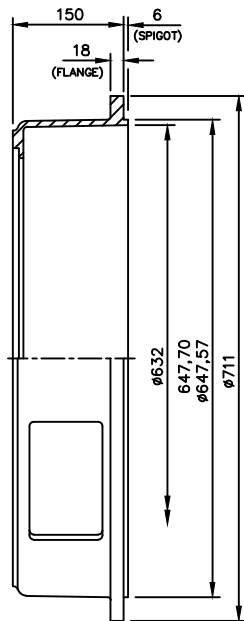
3

2

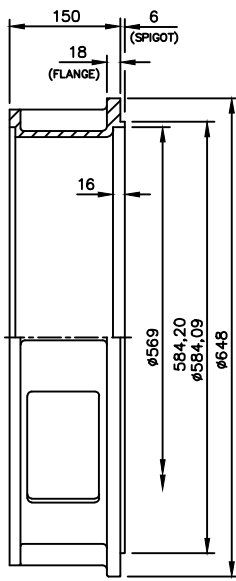
1

REL NO	REV	DETAILS	DWN	CKD	APVD	DATE
ECO-155701	H	FOR CHANGE DETAILS SEE SHEET 1	JAP	SPA	AS	23SEP15

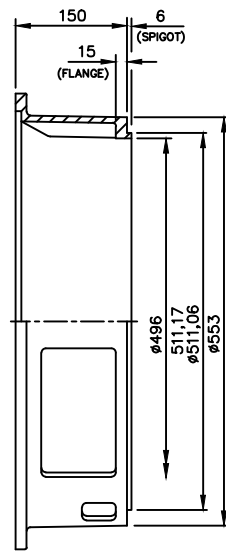
FLANGE ADAPTOR				
S.A.E No	"R"	"S"	"T"	WEIGHT kg
1	12	12,7	530,2	25
1/2	12	14	619,1	27,5
0	16	14	679,5	18



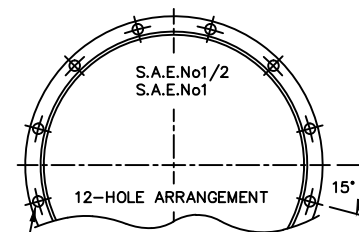
S.A.E.No0



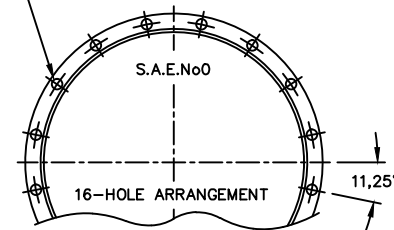
S.A.E.No1/2



S.A.E.No1



"R" HOLES "S" DIA EQUI-SPACED ON "T" P.C.D.



FOR MACHINE DETAILS SEE 41-4497 SHEET-01

UNLESS SPECIFIED ALL DIMENSIONS ARE IN MILLIMETERS			CUMMINS GENERATOR TECHNOLOGIES				
DO NOT SCALE PRINT	DRAWN SMC		DRAWING, GENERAL ASSEMBLY				
	CHECKED SMC		HC4 CDEF 2-BRG STD GA				
CONFIDENTIAL	DATE 05JUL00	SITE CODE	STA	DWG SIZE A4	41-4497	SHEET 2	REV H
PROPERTY OF CUMMINS GENERATOR TECHNOLOGIES	SCALE 1:5	FIRST USED ON ---					

4

3

2

1