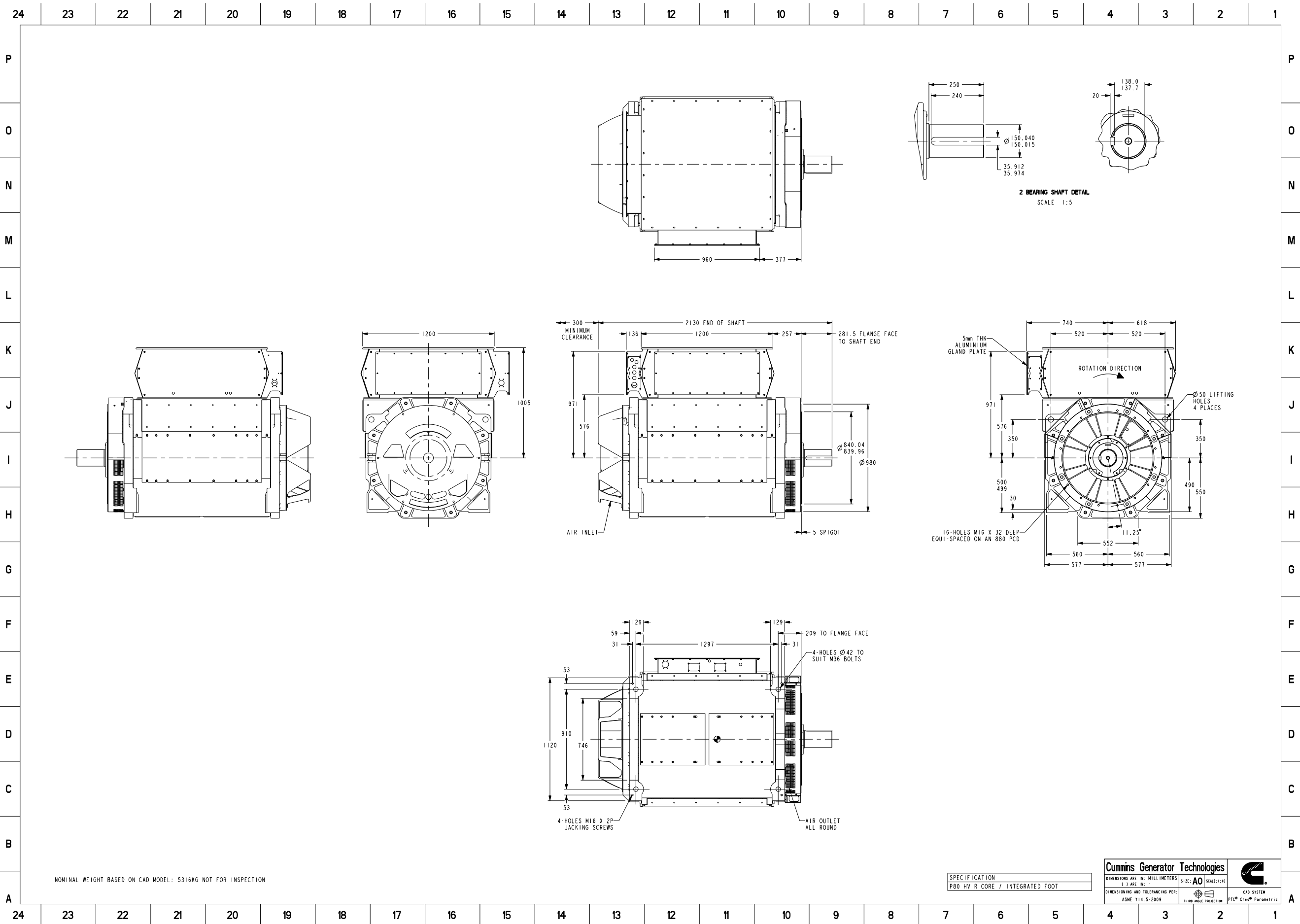


Document Generated: 14APR2020 10:02 GMT



Document Generated: 14APR2020 10:02 GMT

Cummins Data Classification:  
**Cummins Confidential**

This document (and the information shown thereon) is **Confidential and Proprietary** and shall not be disclosed to others in hard copy or electronic form, reproduced by any means, or used for any purpose without written consent of Cummins Inc.

Part Number: **80-2406** Part Revision: **D**  
Part Name: **ARRANGEMENT, GENERATOR GENERAL**  
Drawing Category: **Outline (Tabulation)** State: **Released** Sheet 2 of 3



**Part Number: 80-2406**

Change Notice	CN00017773	Alternates	
Manufacturer Part (MEP)	No	Usage	Production Only
Release Phase Code	Production (P)	Drawing Specification	DS80-2406
External Regulations	No External Regulation		

3D image provided when available for visual reference only.

**Associated Specifications**

Number	Name	Type	Category	Sub-Category
ESA030B356	SPECIFICATION,MATERIAL	Engineering Specification	Material Specification	Prohibited and Restricted  Prohibited and Restricted

**Drawing Revision Information**

Description of Change(s)
DIMENSIONING ADDED/CORRECTED

**Drawing Authorization**

Drafter	Andrew Savill	Date	09APR2020
Checker	Darren George Robert Lee	Date	14APR2020
Approver	NO APPROVAL REQUIRED	Date	

Document Generated: 14APR2020 10:02 GMT