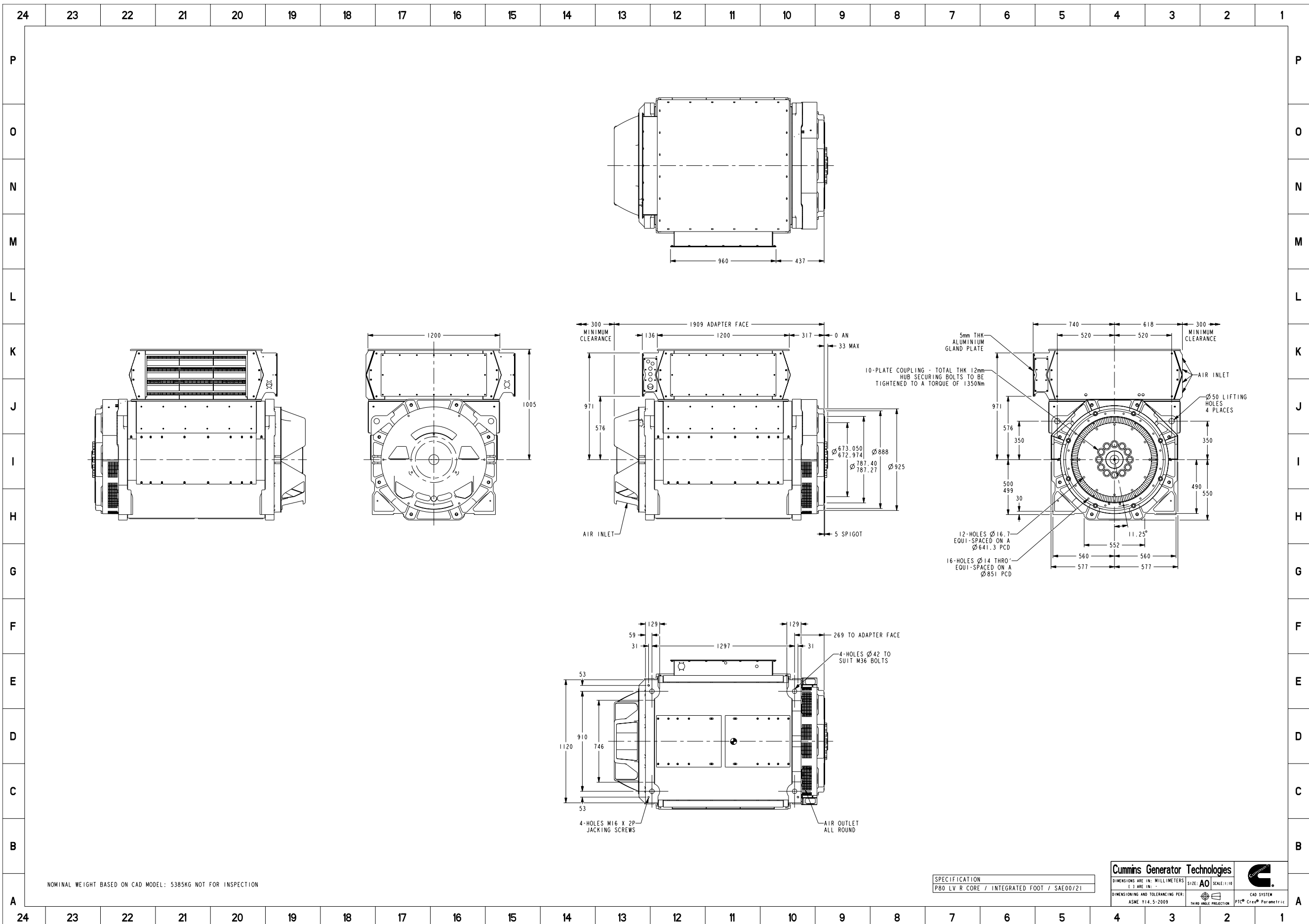


Document Generated: 05OCT2023 10:19 GMT



NOMINAL WEIGHT BASED ON CAD MODEL: 5385KG NOT FOR INSPECTION

SPECIFICATION
P80 LV R CORE / INTEGRATED FOOT / SAE00721

Cummins Generator Technologies		
DIMENSIONS ARE IN: MILLIMETERS () ARE IN: -		
DIMENSIONING AND TOLERANCING PER: ASME Y14.5-2009		SIZE: A0 SCALE: 1:10 THRU ANGLE PROJECTION CAD SYSTEM PTC® Creo® Parametric

Document Generated: 05OCT2023 10:19 GMT



Part Number: 80-2442

Change Notice	CN00110381	Alternates	
Manufacturer Part (MEP)	No	Usage	Production Only
Release Phase Code	Production (P)	Drawing Specification	Number: DS80-2442
External Regulations	No External Regulation		Revision: B

3D image provided when available for visual reference only.

Drawing Revision Information

Description of Change(s)

Note: Change information is provided for reference only and does not supersede the drawing's primary content.

DRAWING - END BRACKETS, WEIGHT, C OF G AND DRAWING BORDER UPDATED

PART - NO CHANGE

Drawing Authorization

Drafter	Andrew Savill	Date	03OCT2023
Checker	Tony Charles Clarke	Date	05OCT2023
Approver	NO APPROVAL REQUIRED	Date	

Document Generated: 05OCT2023 10:19 GMT