

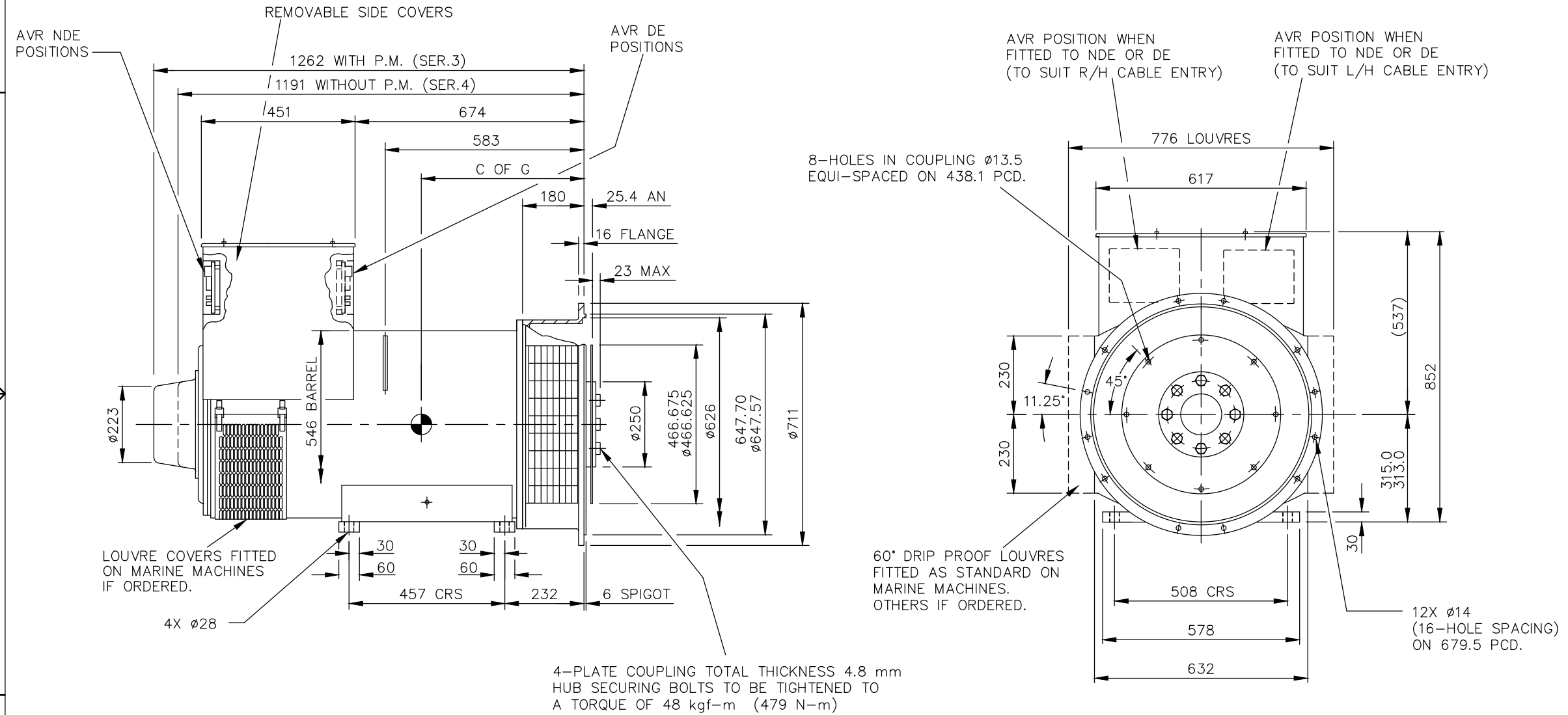
AutoCad

CORE	WEIGHT (KG)	C OF G (MM)
F	1160	530

REL NO	REV	NO	REVISION	DWN	CKD	APVD	DATE
ECO-172149	B	1	ZONE D4, ADDED WEIGHT (1160 KG) FOR F CORE	NK	PN	S_NARAYANAN	07SEP17
		2	IN TITLE BLOCK, DESCRIPTION S4L1S WAS S4	NK	PN	S_NARAYANAN	07SEP17

NOTE: -

- CUSTOMER MAY CUT CABLE ENTRY HOLES AS REQUIRED IN ANY OF THE FOUR TERMINAL BOX SIDES SUBJECT TO POSITION OF AVR, TERMINALS, ETC.



UNLESS OTHERWISE SPECIFIED, ALL DIMENSIONS ARE IN MILLIMETERS	SIM TO 41-4545	DRAWN S_BALAMURUGAN		CUMMINS GENERATOR TECHNOLOGIES	
	DO NOT SCALE PRINT	CHECKED A_BIRARI		DRAWING, GENERAL ASSEMBLY	
SCALE 1:10		APPROVED B_SURVE	SITE CODE	S4L1S F 1-BRG SAE 0/14 STD T/BOX	
THIS DOCUMENT (AND THE INFORMATION SHOWN THEREON) IS CONFIDENTIAL AND PROPRIETARY AND SHALL NOT BE DISCLOSED TO OTHERS IN HARD COPY OR ELECTRONIC FORM, REPRODUCED BY ANY MEANS, OR USED FOR ANY PURPOSE WITHOUT WRITTEN CONSENT OF CUMMINS INC.	FOR INTERPRETATION OF DIMENSIONING AND TOLERANCING, SEE ASME Y14.5-2009	DATE 06FEB17	STA	DWG SIZE A4	A057B665
		FIRST USED ON S4			CAD SHEET 1 OF 1