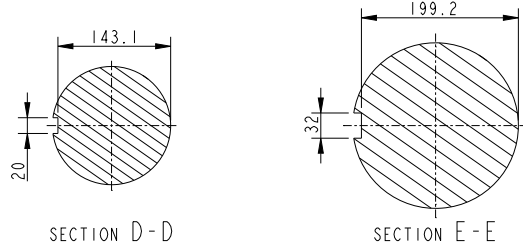
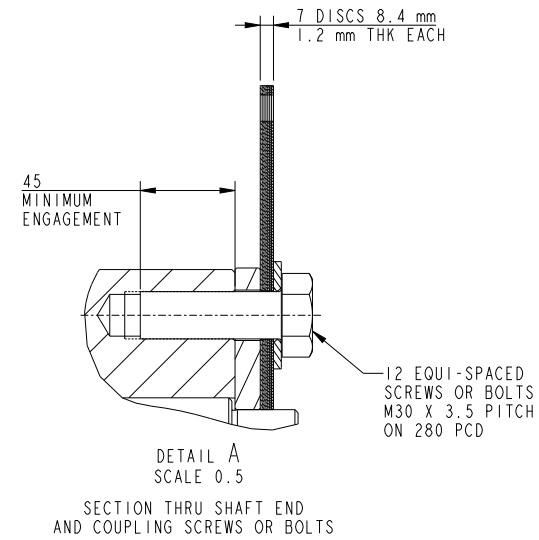


- NOTES:
- SHAFT STIFFNESS: THE STIFFNESS OF THE SHAFT BETWEEN THE MAIN ROTOR CORE AND THE COUPLING HUB IS 223.5×10^6 kgcm/radian (STIFFENING EFFECT OF MAIN ROTOR CORE IS NOT INCLUDED IN THIS FIGURE).
 - SHAFT PROPERTIES:
 MINIMUM YIELD : 260MPa
 MINIMUM ULTIMATE TENSILE STRENGTH : 530MPa
 SHAFT MATERIAL IS APPROVED BY MARINE AUTHORITIES WHEN APPROPRIATE.
 - MAXIMUM RECOMMENDED VIBRATORY STRESS LEVEL IN THE SHAFT IS 34.47×10^6 N/m² FOR SPEED RANGE OF 0.95 TO 1.1 X NOMINAL SPEED AND 68.94×10^6 N/m² FOR RUN THROUGH CONDITIONS, FOR INDUSTRIAL MACHINES.
 - FOR MARINE AUTHORITIES, THEIR APPROPRIATE RULES WILL APPLY.
 - CUMMINS GENERATOR TECHNOLOGIES LTD SHOULD BE NOTIFIED OF ANY ROTORS NOT COMPLYING WITH THESE RULES.
 - CUMMINS GENERATOR TECHNOLOGIES LTD BALANCE ROTORS TO COMPLY WITH INTERNATIONAL STD ISO 1940 GRADE 2.5 AND BS 6861 PART 1 GRADE 2.5.
 - FOR UNBALANCED MAGNETIC PULL (U.M.P.) FORCES PLEASE CONTACT CUMMINS GENERATOR TECHNOLOGIES LTD.



CONVERSION FACTORS		
TO CONVERT	TO	DIVIDE BY
kg	lb	0.453592
kg m ²	lb ft ²	0.04214
kgcm/rad	lbin/rad	1.1521246
N/m ²	lbf/in ²	6894.76

COMPONENT	Wt kg	WR ² kg.m ²
FAN	37.27	4.0490
HUB	117.12	2.1994
SHAFT	452.12	2.2532
MAIN ROTOR	1391.96	57.0855
EXCITER ROTOR	63.00	1.0720
P. MAG ROTOR	6.97	0.0190
STUB SHAFT	0.93	0.0003
TOTAL	2068.63	66.6052

COUPLING SAE No.	COUPLING DIMENSIONS		TOTAL MASS OF COUPLING ASSEMBLY (kg)	COUPLING STIFFNESS (kgcm/rad)	COUPLING DISC WR ² (kg.m ²)
	Ø XX mm	YY mm			
18	572	16	27.85	1857 X 10 ⁶	0.590
21	673	00	25.92	1713 X 10 ⁶	1.135
24	733	00	30.08	1666 X 10 ⁶	1.598

Cummins Generator Technologies

DIMENSIONS ARE IN: MILLIMETERS
 SIZE: A1 SCALE: 0.25
 DIMENSIONING AND TOLERANCING PER: ASME Y14.5-2009
 THIRD ANGLE PROJECTION
 CAD SYSTEM: PTC® Creo® Parametric

DRAWING SPECIFICATION DESCRIPTION
 S7K, 4-POLE, 1-BRG



Part Number: A072F875

Change Notice	CN00116937	Alternates	
Manufacturer Part (MEP)	No	Usage	Production Only
Release Phase Code	Production (P)	Drawing Specification	Number: DS47106345
External Regulations	No External Regulation		Revision: B

3D image provided when available for visual reference only.

Drawing Revision Information

Description of Change(s)

Note: Change information is provided for reference only and does not supersede the drawing's primary content.

IN ZONE D2, UPDATE EXCITER ROTOR WT AND WR2 VALUE

ADMINISTRATIVE CHANGE(S) TO PART ATTRIBUTES, BILL OF MATERIAL, OR ASSOCIATED SPECIFICATIONS.

Drawing Authorization

Drafter	Qun Zhou	Date	05DEC2023
Checker	Milo Chen	Date	07DEC2023
Approver	Krzysztof Wejrzanowski	Date	14DEC2023

Document Generated: 14DEC2023 10:18 GMT