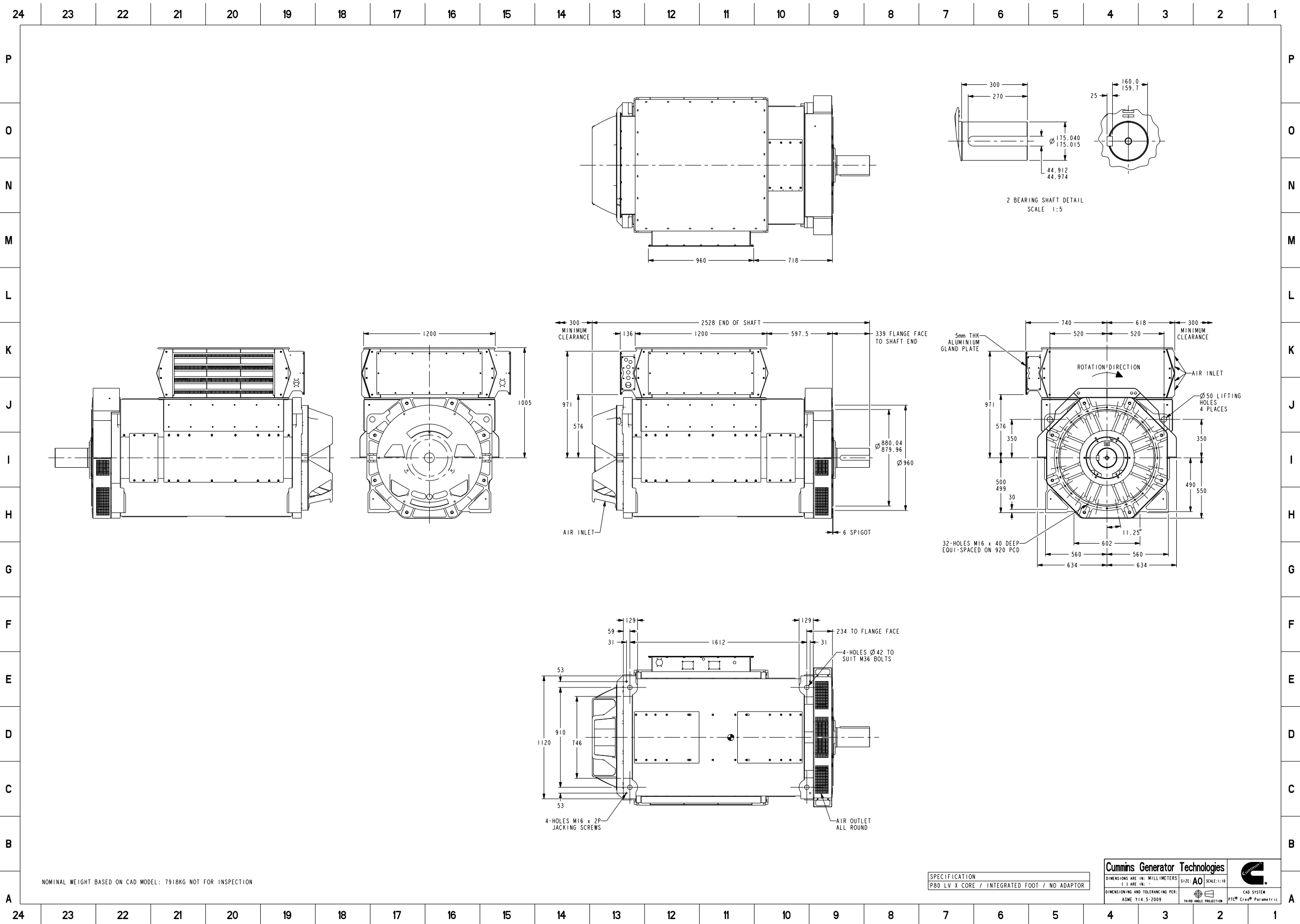


NOMINAL WEIGHT BASED ON CAD MODEL: 7918KG NOT FOR INSPECTION

SPECIFICATION
P80 LV X CORE / INTEGRATED FOOT / NO ADAPTOR

Cummins Generator Technologies			
DIMENSIONS ARE IN: MILLIMETERS () ARE IN: -	SIZE: A2	SCALE: 1:10	
DIMENSIONING AND TOLERANCING PER: ASME Y14.5-2009	THIRD ANGLE PROJECTION		CAD SYSTEM PTC® Creo® Parametric

Document Generated: 02NOV2020 12:13 GMT



Document Generated: 02NOV2020 12:13 GMT



Part Number: 80-2472

Change Notice	CN00025583	Alternates	
Manufacturer Part (MEP)	No	Usage	Production Only
Release Phase Code	Production (P)	Drawing Specification	DS80-2472
External Regulations	No External Regulation		

3D image provided when available for visual reference only.

Associated Specifications

Number	Name	Type	Category	Sub-Category
ESA030B356	SPECIFICATION,MATERIAL	Engineering Specification	Material Specification	Prohibited and Restricted Prohibited and Restricted

Drawing Revision Information

Description of Change(s)
END BRACKETS, WEIGHT, C OF G AND DRAWING BORDER UPDATED

Drawing Authorization

Drafter	Andrew Savill	Date	02NOV2020
Checker	Darren George Robert Lee	Date	02NOV2020
Approver	NO APPROVAL REQUIRED	Date	

Document Generated: 02NOV2020 12:13 GMT