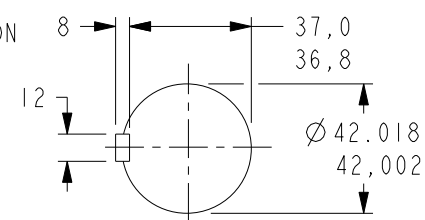


DRG. SIZE C	REL. PHASE P	PART No 19-1174	ISSUE A
----------------	-----------------	--------------------	------------

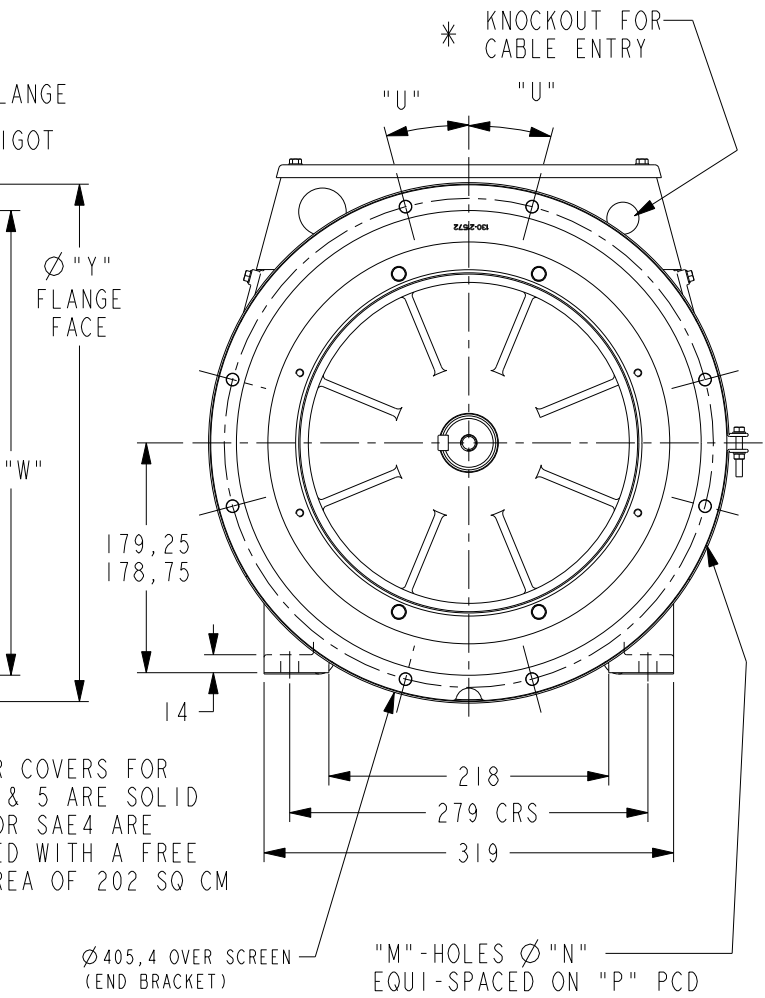
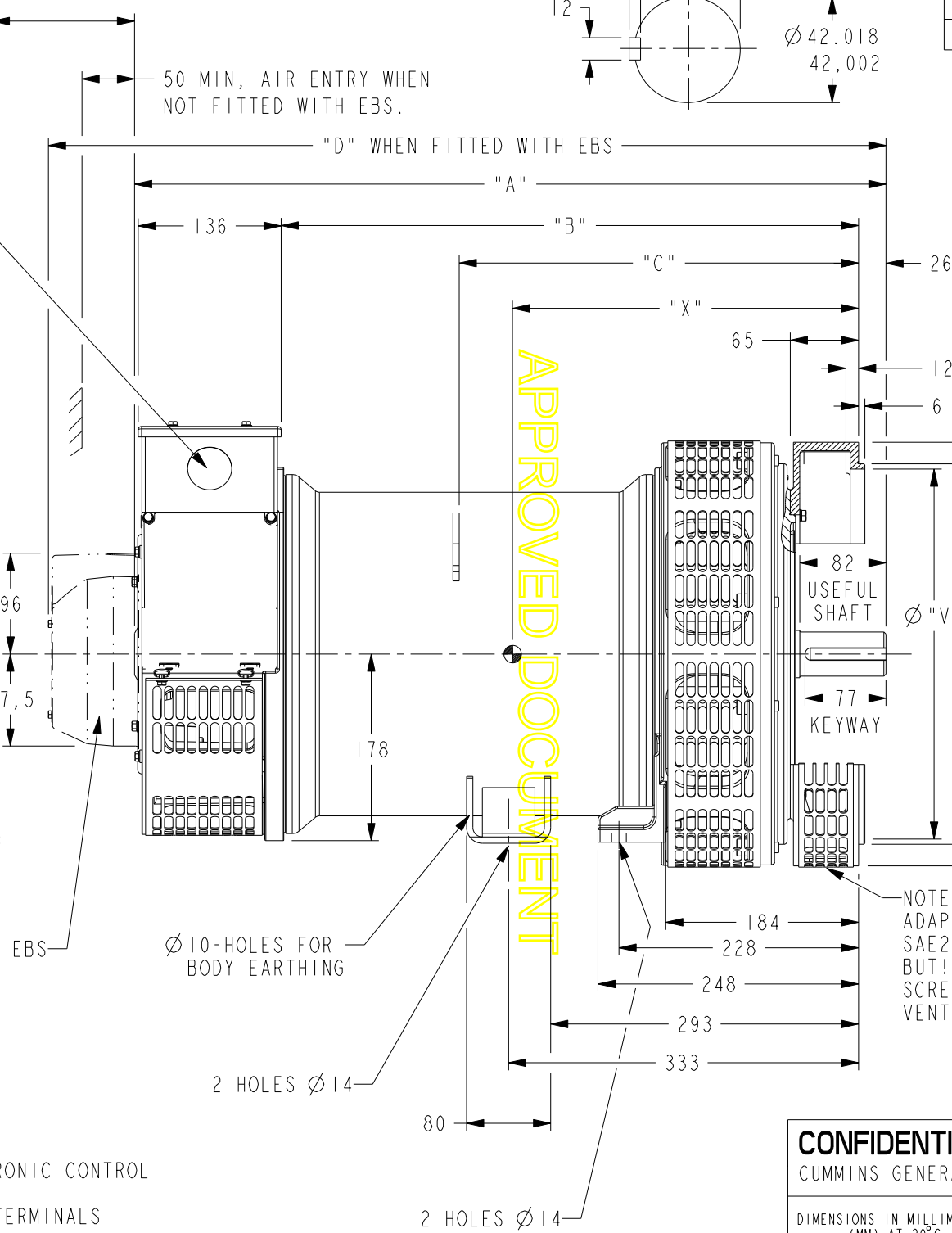
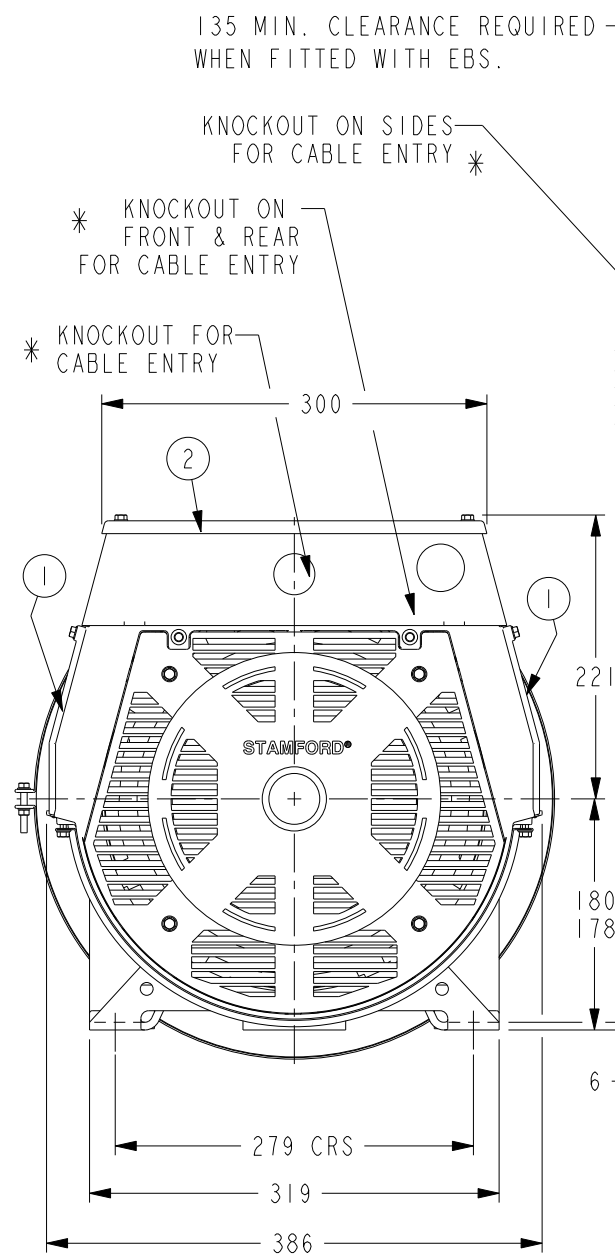
IF IN DOUBT-ASK
DO NOT SCALE

SHAFT EXTENSION
DETAIL



DIMENSIONS						
FRAME	"A"	"B"	"C"	"D"	"X"	NETT WT. (Kg)
PI2H2	685	519.5	365	767	320	185
PI2J2	715	549.5	380	797	335	195

ADAPTOR DIMENSIONS							
SAE	"M"	"N"	"P"	"U"	"V"	"W"	"Y"
2	12	11	466.7	15°	432	447.6	495
3	12	11	428.6	15°	396	409.5	451
4	12	11	381.0	15°	352	361.9	403
5	8	11	333.3	22.5°	301	314.3	356



NOTE:
ADAPTOR COVERS FOR
SAE2,3 & 5 ARE SOLID
BUT! FOR SAE4 ARE
SCREENED WITH A FREE
VENT AREA OF 202 SQ CM

- ① -REMOVABLE COVER FOR ACCESS TO ELECTRONIC CONTROL
- ② -REMOVABLE COVER FOR ACCESS TO MAIN TERMINALS
- * FOR KNOCKOUT DETAILS REFER TERMINAL BOX DRAWING

APPROVED DOCUMENT

CONFIDENTIAL PROPERTY OF
CUMMINS GENERATOR TECHNOLOGIES LTD.

DIMENSIONS IN MILLIMETRES
(MM) AT 20°C

UNLIMITED DIMS ± --

PROJECTION

PI H/J 2-POLE
2-BEARING ALTERNATOR
WITH COUPLING ADAPTOR
STANDARD TERMINAL BOX

DRG. SIZE C	SCALE 3:10
REL. PHASE P	PART No 19-1174
PRO/ENGINEER	ISSUE A
SHEET 1 OF 1 SHEETS	

5-0223-58	A	DW	21/5/10	ORIGINAL ISSUE
MOD.	ISSUE	DRAWN	DATE	MODIFICATION